



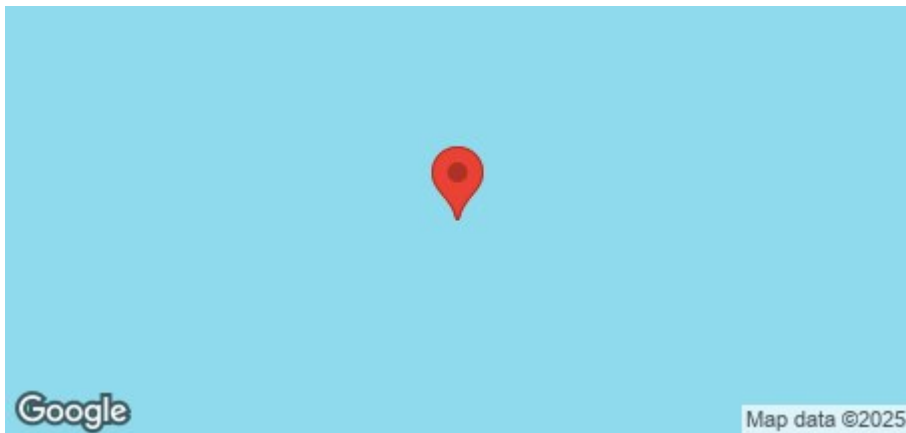
Units Grecian Street, Salford, M7 1JF

£2,200 Per Month

1742.00 sq ft



Area Map



These particulars, whilst believed to be accurate are set out as a general outline only for guidance and do not constitute any part of an offer or contract. Intending purchasers should not rely on them as statements of representation of fact, but must satisfy themselves by inspection or otherwise as to their accuracy. No person in this firm's employment has the authority to make or give any representation or warranty in respect of the property.

3 Middleton Road, Manchester, M8 5DT

T: 0161 773 3978 | info@amcocommercial.co.uk

Details

Amco Commercial are delighted to offer a newly built industrial unit with electric roller shutter access and clean open-plan internal space. The unit benefits from excellent internal lighting, high clearance, and three-phase power supply.

The building is suitable for a range of uses, including storage, light industrial or trade purposes. There is also flexibility to split the unit in half if required.

The property is a total of 1,742 sq ft or 162 sq m.

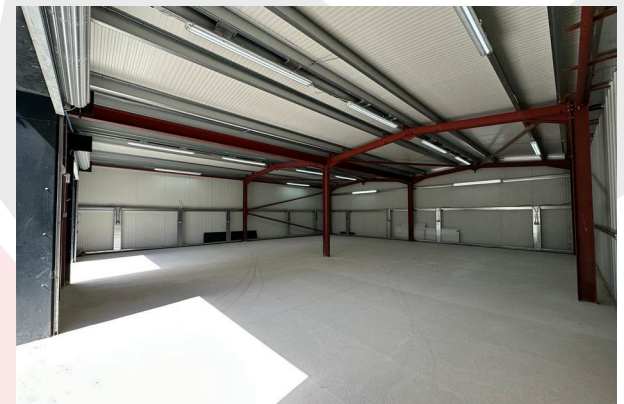
The lowest point of the eaves is 3.15m

Located just off Bury New Road, the site offers easy access to Manchester city centre and surrounding transport links.

Get in touch today to arrange a viewing.

Viewing

Please contact us on 0161 773 3978 if you wish to arrange a viewing appointment for this property or require further information.



Zoopla



rightmove

